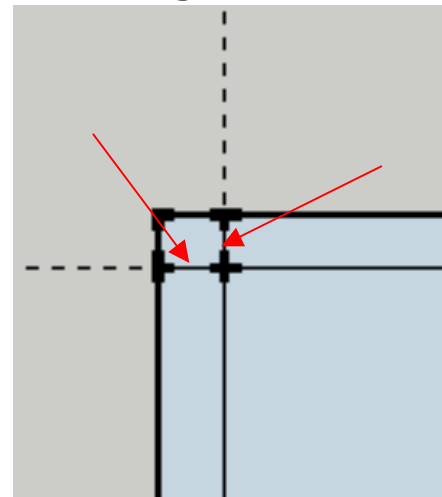


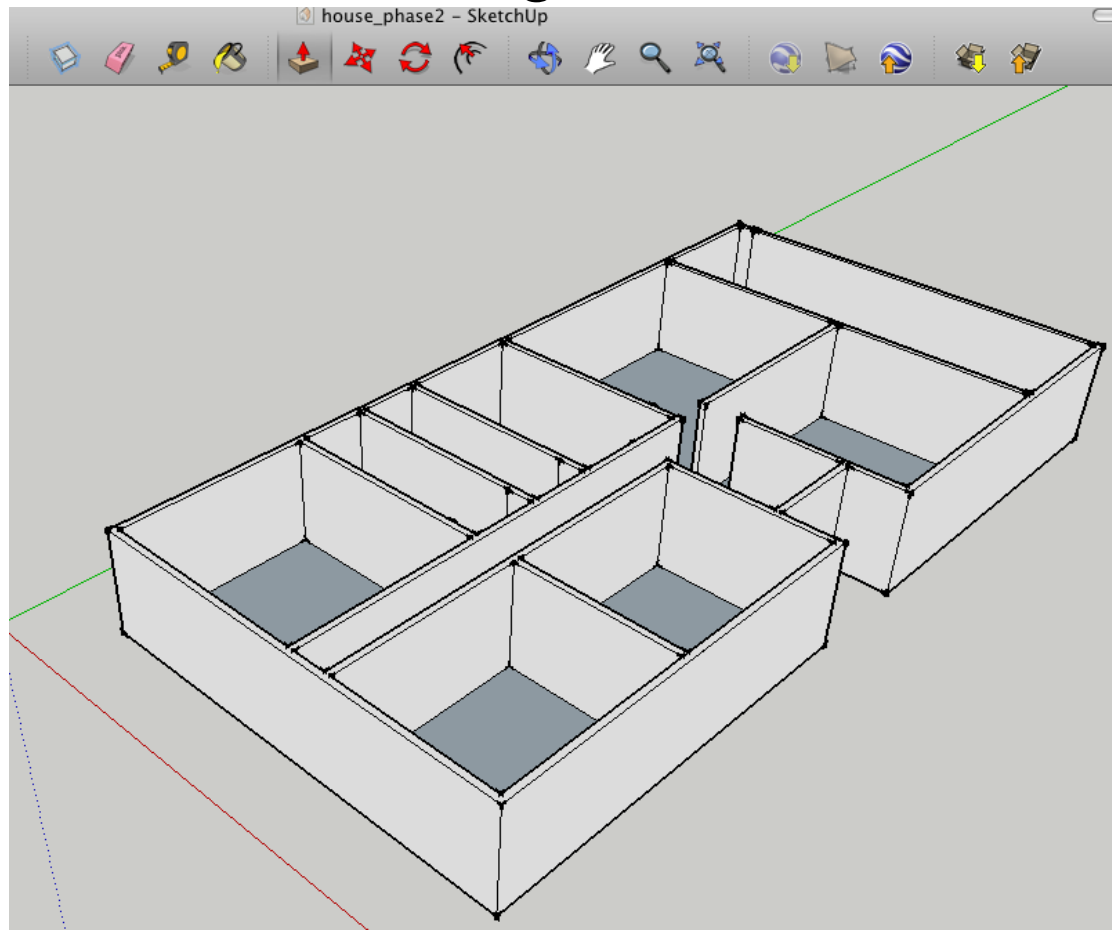
SketchUp Steps

- Sketch out on paper first
 - Area of between 1,500 to 2,000 sq ft
 - Area of a rectangle is length x width
 - 3 bedrooms, two baths, kitchen, living room, etc.
- Make sure units are feet - inches
 - Window, Model Info., Units, Architectural
- Start in two dimensional mode
 - Camera, Standard Views, Top
 - Camera, Parallel Projection

- Do outside of house using pencil tool
 - Start drawing, type in number of feet followed by foot sign ‘
- Make inside rooms
- Make walls
 - Measure with ruler 6 inches out from each line
 - Creates guide line
 - Draw with pencil over the guide lines
- Erase all of the little intersection lines



- Switch back to camera, standard views, Iso and camera, projection
- Using the Push Pull tool, raise walls.
 - Standard wall height is 8 feet.



- Make windows and doors using rectangle tool
- Punch out windows and doors using push pull tool
- Make roof
 - With pencil trace along outside of top of house
 - Using offset tool expand e.g. 1 foot all around
 - Raise e.g. 6 inches using push pull tool
 - Draw center line across roof
 - Select that line
 - Raise that line using the move tool